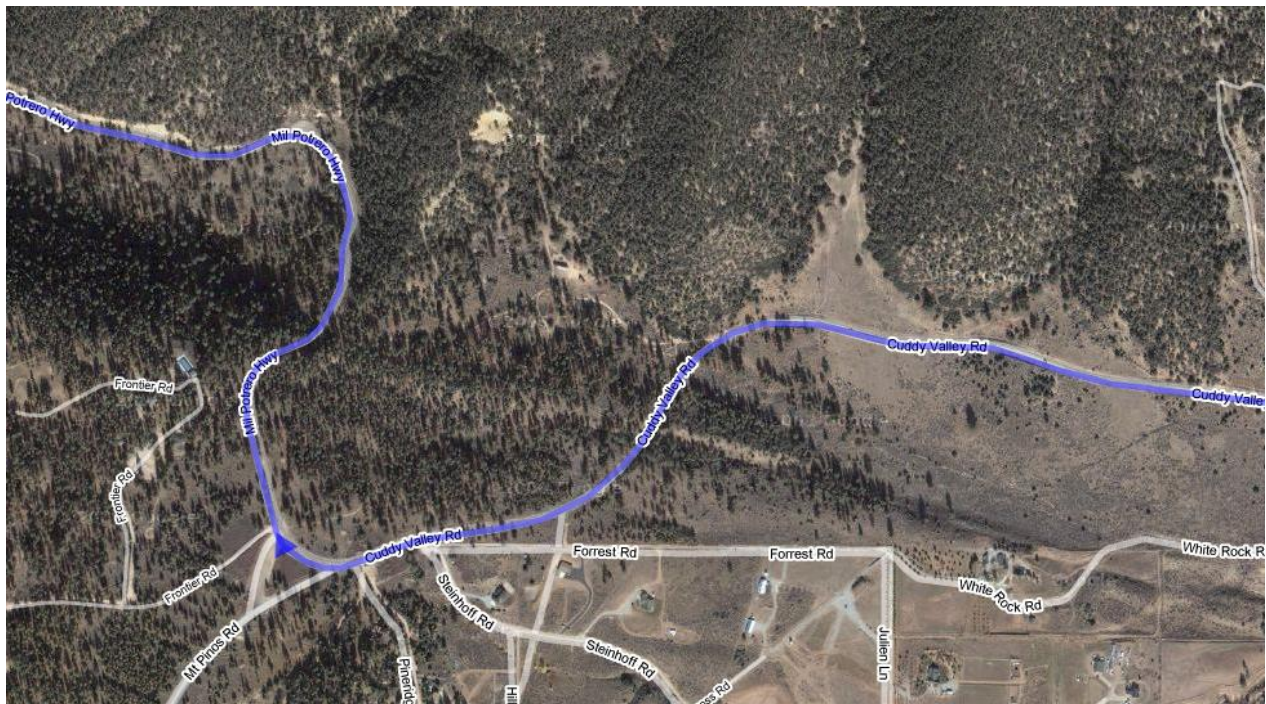


# Directions to the Campo Alto Game Site:

You will need a Forest Adventure Pass for each day you are at the site.

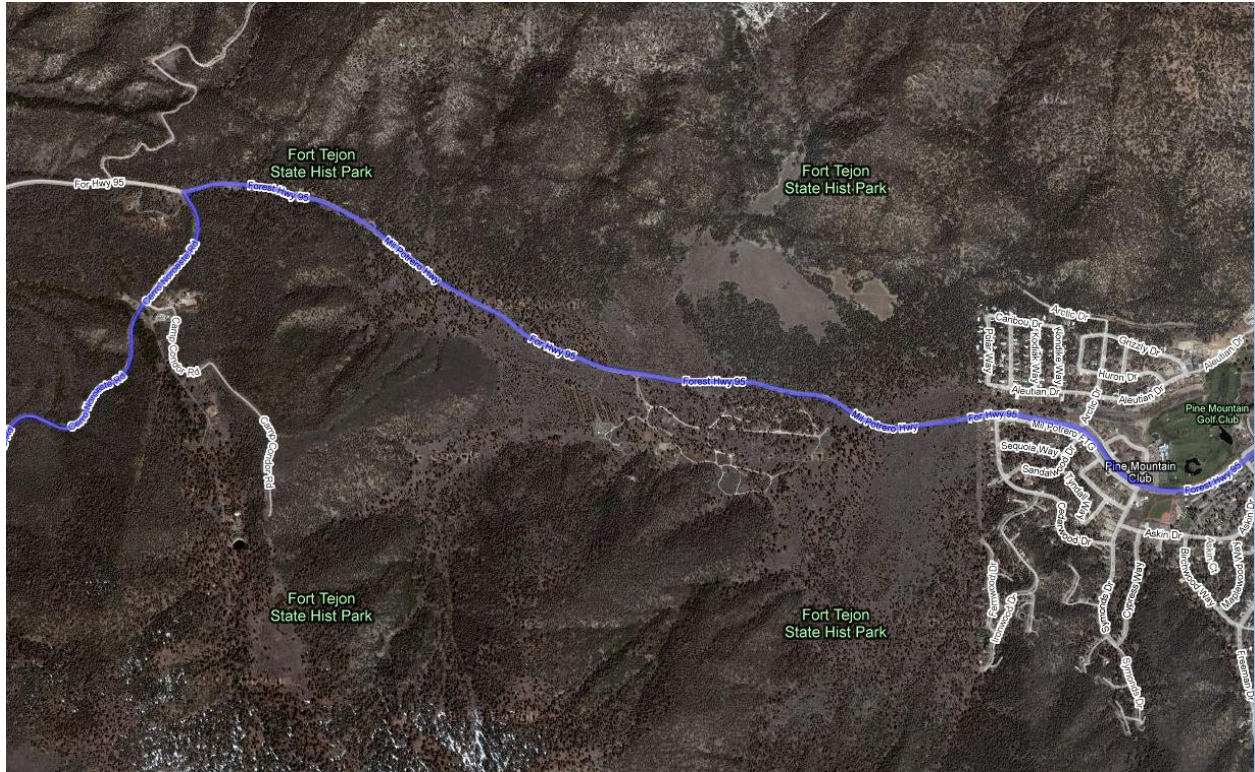
[Google Map Directions Link](#)

- Find your way to I-5 North
- Exit Frazier Mtn. Park Road (Exit #205 but we aren't sure the number is on the sign)
- Turn left at the bottom of the ramp, back under the freeway
- Stay straight, passing the Flying J on your left. This is a good place for last minute gas, food, ice.
- Stay straight for quite awhile, you will be on Cuddy Valley Rd.
- Go through the town called Lake of the Woods, which has a lower speed limit, a pizza place, and often a speed trap. Just FYI.
- Watch for a fork just after passing the signed entrance of a Boy Scout Camp. You will turn Right onto Mill Potrero Highway (as depicted below). **CHECK YOUR ODOMETER.**  
**You need to track 8 miles from this turn.**



- Stay straight, through a town called Pine Mountain Club, which has lots of log-cabin-like structures, and a golf course just to the right of the road.

- Watch for a left turn (we will hopefully have a Campaign sign here), called Cerro Noroeste Rd. This turn is about 8 miles from when you entered Mill Potrero Highway. Pictured below is the Pine Mountain Club to Cerro Noroste Rd maneuver.



- Cerro Noroeste Rd will terminate about 8 miles later at the Campo Alto Campground.